

# The real Maine Woods



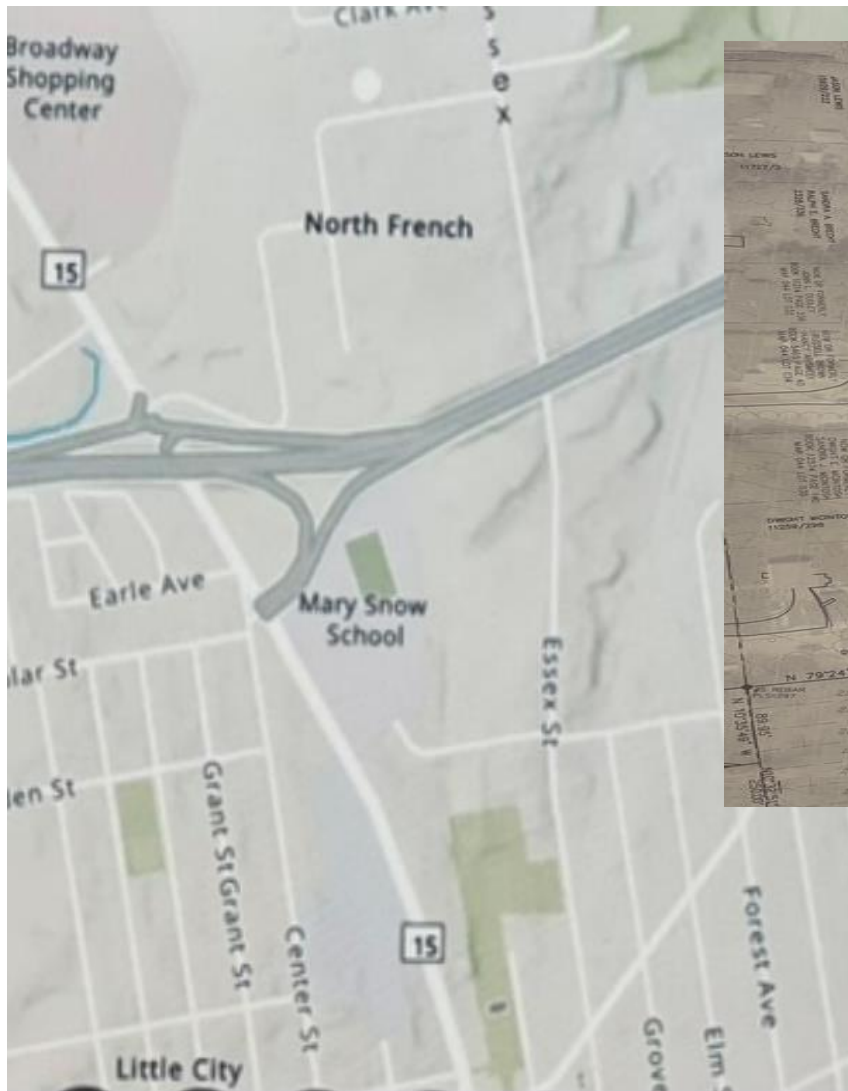
This parcel of property sits on the edge of a ledge with depths varying from 1.5 ft to 9ft per their test pit results. Erosion will increase the intensity of stormwater runoff in this portion of the city. It flows directly into the most threatened portion of the Arctic Brook. This impaired Brook is listed on the 303 (d) list as it is at high risk for permanent loss of aquatic life. The Brook then empties into the Kenduskeag stream (a stream used for annual recreational activities such as the canoe race.) It ultimately empties into the Penobscot river. The addition of 60 new driveways, 120 parking spots, and the potential for hundreds of new cars will bring with them a large amount of road salt and chloride, an impossible chemical to remove from stormwater runoff. Due to the steep drop in elevation this will quickly and frequently discharge into the Brook and beyond.

I believe a case could be made that it does not conform to Land Development approval standards 165-114 D. It does not conform to conditional use 165-9 #2 and 3.









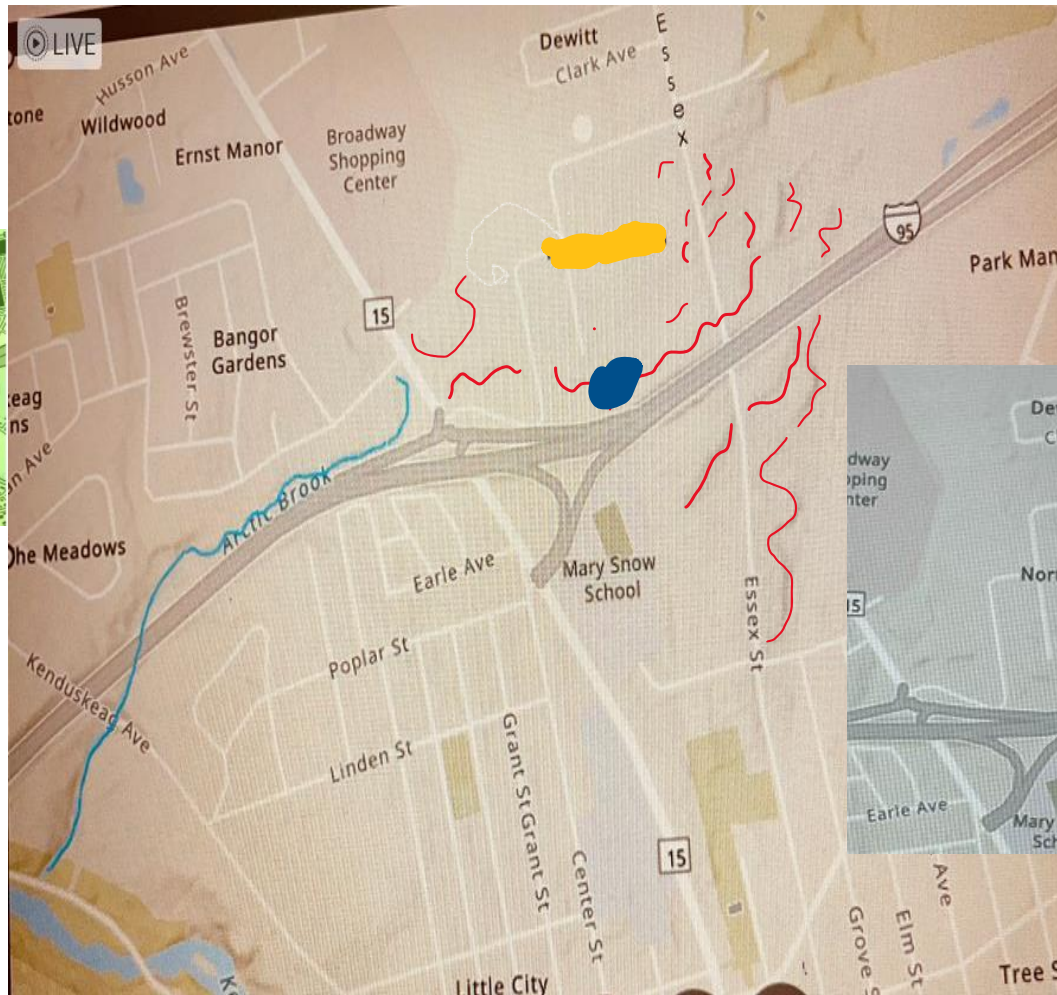
13 of the 15 test pits show ledge  
At varying degrees, some as shallow  
As 1.5ft.

2 test pits appear to be located on  
Other people's property

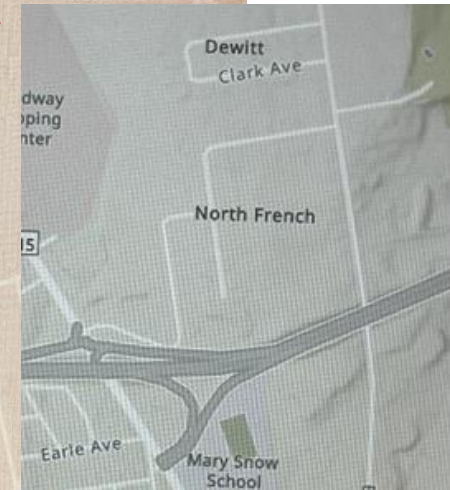
These wetlands appear on the D1 Post  
Development map but disappear on  
Others.



Alden St. sits at an elevation of 153ft.



Lancaster sits at an elevation of 204 ft



varying degrees of ledge coupled with a significant sloped drop in elevation will accelerate erosion patterns and increase flooding risks to Broadway, Essex, and I-95. The swift moving water channels will also sweep toxic materials through the Arctic Brook increasing over time as erosion patterns worsen and settling occurs.











Water channel flows off the highway towards the Arctic Brook  
Alden St. lifted and shifting from water main break sending dirty water to the Brook  
These two areas were only separated by a fence. Is there wetland mapping available for this area as it is a direct extension to the wetlands on the abutting Team Properties?









WATER LINE INSTALLATION  
5/30/23







By [Sierra vnaiey](#)

Published: Jun. 5, 2023 at 3:10 PM EDT

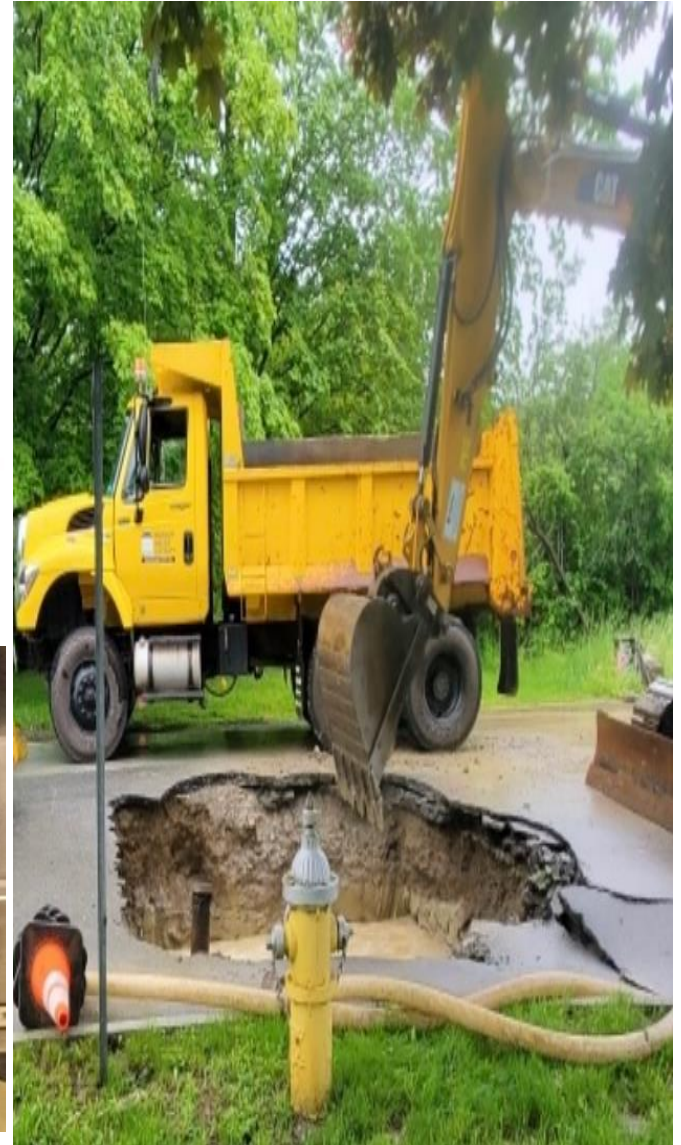


**BANGOR, Maine (WABI) - There were reports of a water main break early in the afternoon of June 5 in Bangor.**

**A road closure sign was posted along the street of Alden as crews from the Bangor water district tended to the accident.**

**Officials say a ten foot main cracked overnight which caused the break to occur.**

**Water was shut off on French and Bill street and within the Broadway shopping center**











- A chemical spill beginning at the Maine Woods entrance all the way to North French St.
- 6/14/23







East Broadway in May 2023 and  
October 2023





This wet pond drains into documented wetlands, down through documented wetlands, into a 303d impaired Arctic Brook.





- Wet Pond that drains into wetlands



Taken in October after stop work order in effect. No blockade or warning of a break in the road.



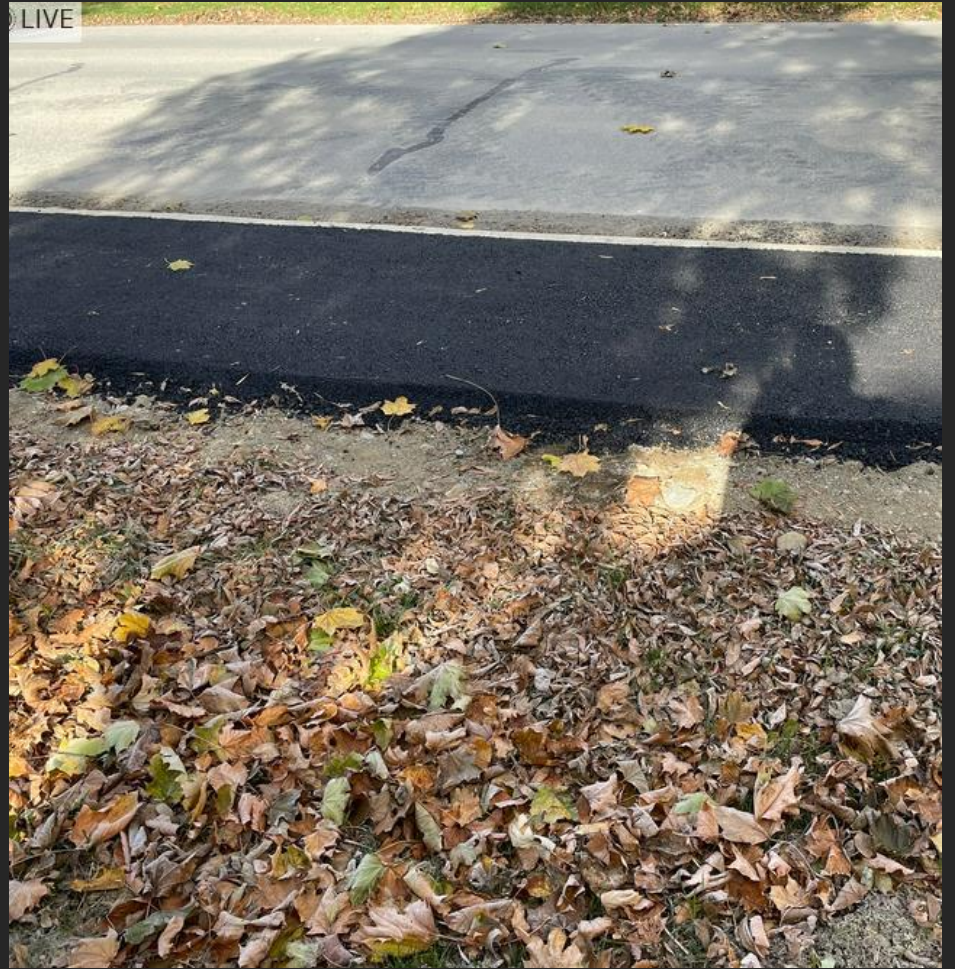






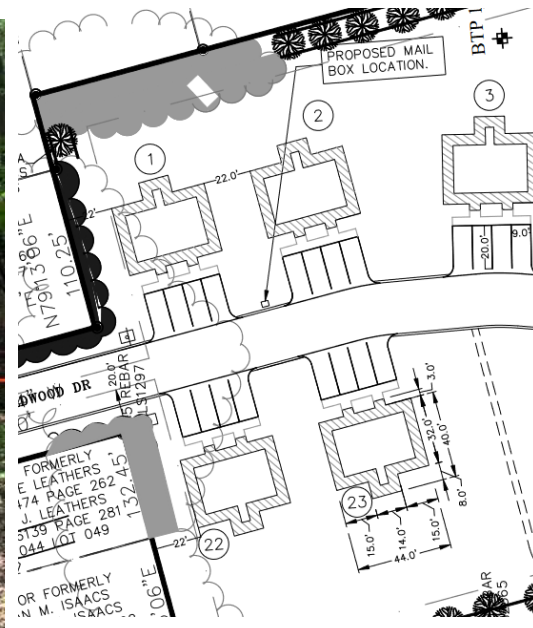




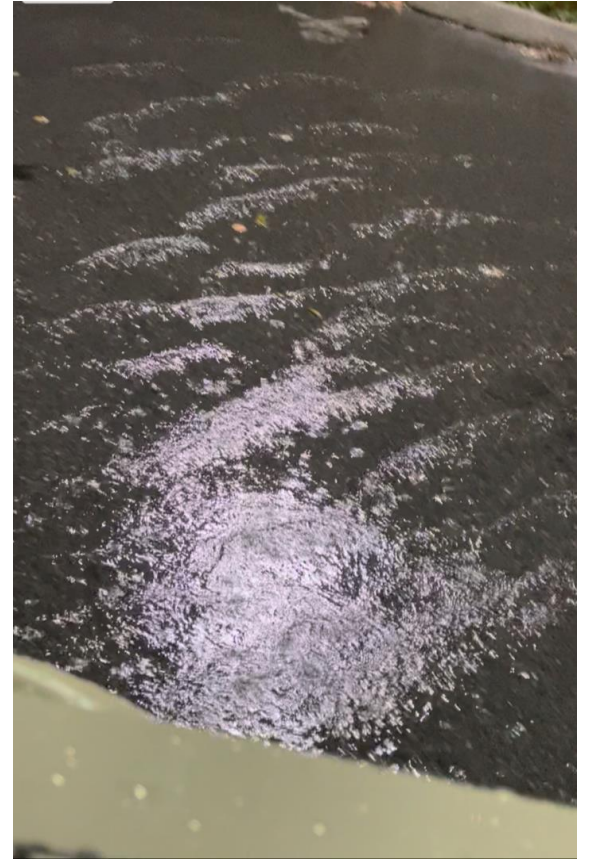
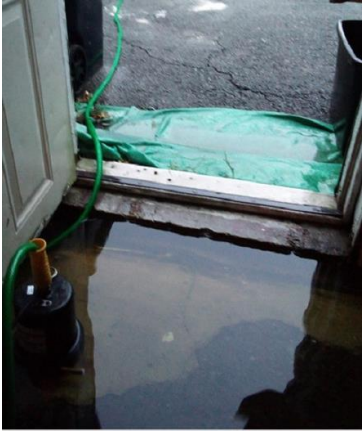




Picture from my abutting property line. Pink ribbon shows where duplex 1 was to be built. The yellow x indicates their proposed mailbox location. If anyone in these first four homes has visitors parked on the street it could create a traffic hazard having the community mailbox so close to the entrance.











EROSION CONTROL MEASURES ARE NOT CUTTING DOWN TREES



