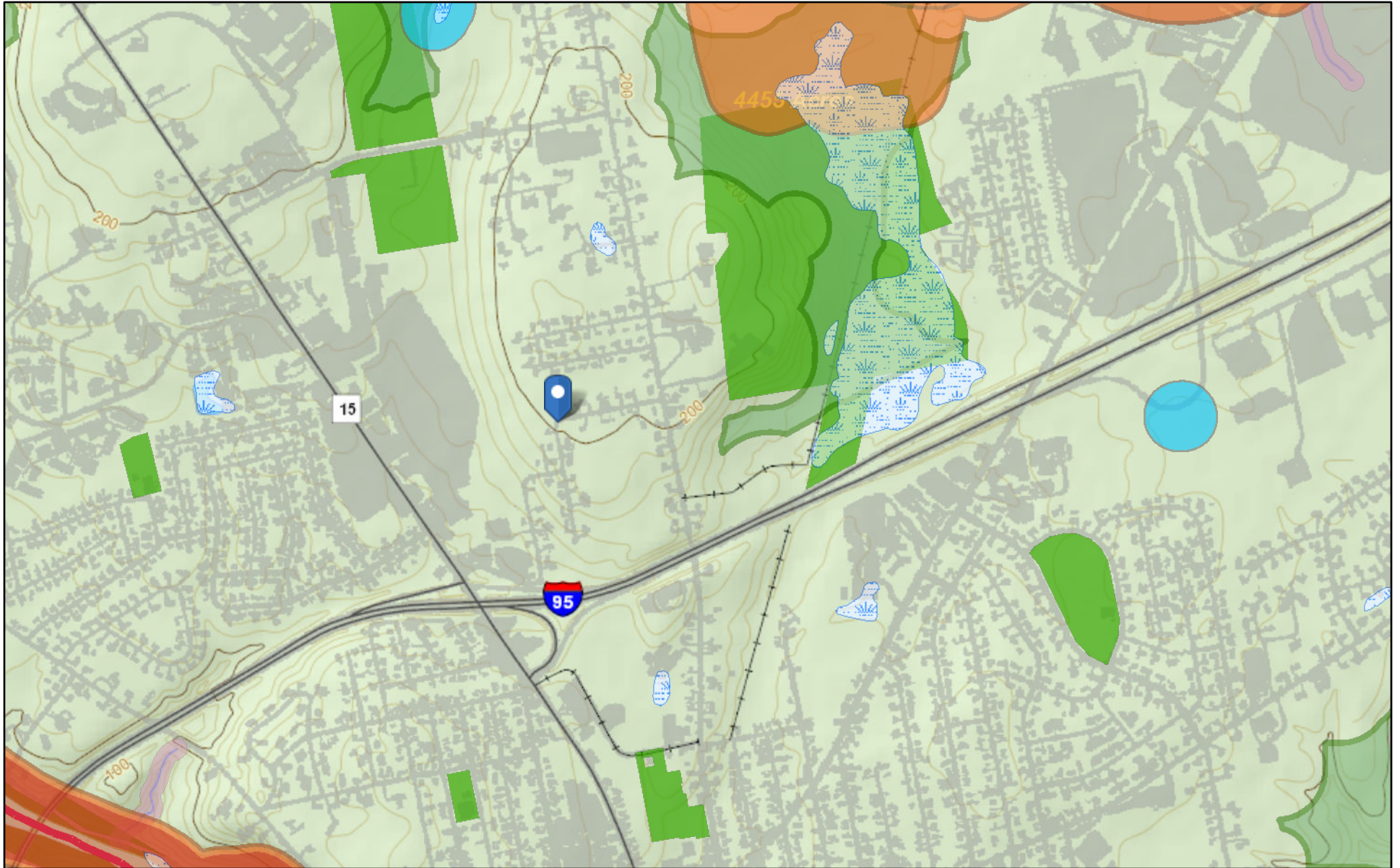
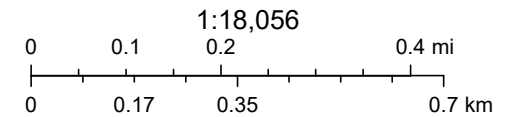


State of Maine Mapped Significant Wildlife Habitat/Natural Areas in Relation to Project Site



December 5, 2023

- | | | | |
|---|--|---|------------------------------|
| Aquifers | Shorebird Habitat | Essential Wildlife Habitats | Riparian Connectors |
| National Wetlands Inventory Wetlands | Seabird Nesting Island | Endangered, Threatened, and Special Concern Species | Less than 2000 Vehicles/Day |
| Shellfish Beds | Tidal Waterfowl / Wading Bird Habitat | Natural Communities | More than 2000 Vehicles/Day |
| Stream Buffer (75 feet) | Inland Waterfowl / Wading Bird Habitat | Rare Plants and Natural Communities | Undeveloped Block Connectors |
| Great Ponds, Rivers and Coastal Buffer (250 feet) | Significant Vernal Pools | Conserved Lands | Less than 2000 Vehicles/Day |
| Atlantic Salmon Habitat | Deer Wintering Areas | Highway Bridge Connectors | More than 2000 Vehicles/Day |
| | | | Undeveloped Habitat Blocks |



Beginning with Habitat Program for Planning Purposes Only
Map Created With BWH Map Viewer